

## Corbeille à ouvrage 11/01/1906 sewing basket

This basket is bleurette size, but of course you can enlarge it for your own  
Trace the circle on light weight cardboard.

Cut out.

Cut the triangles A/A B/B C/C and D/D out of the cardboard

Trace two circles, a tiny larger then the cardboard on 2 different fabrics

At the inside we will stitch a pincushion and a needle holder (fig: interieure de la corbeille)

Trace the dotted lines on your inside fabric with a thread ( by stitching some large stitches)

Sitch pincusion and needle holder on their place;

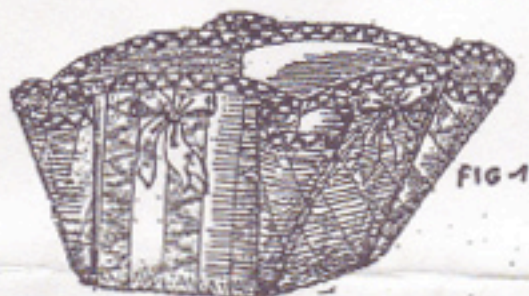
Trace the dotted lines on your outside fabric (thread)

Now pin both fabrics to eachother (back sides together) and stitch on the dotted lines: AtoA  
BtoB, CtoC and DtoD. Now you have the basket shown in fig 1

Cut your cardboard on the dotted lines. Put the 5 pieces in place in your basket

Stitch a ruban on the upper hem . Decorate with 4 tiny bows

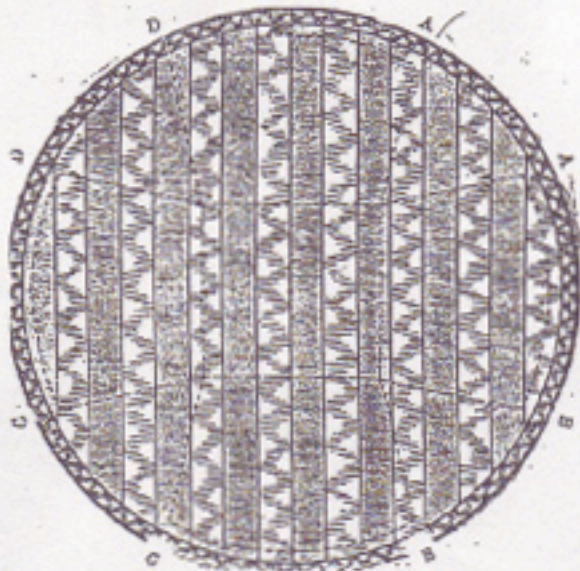
### Corbeille à Ouvrage



Corbeille terminée.



Intérieur de la corbeille.



Côté extérieur de la corbeille.