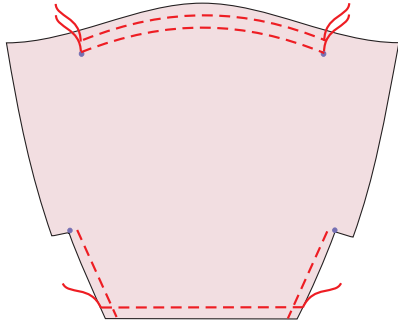


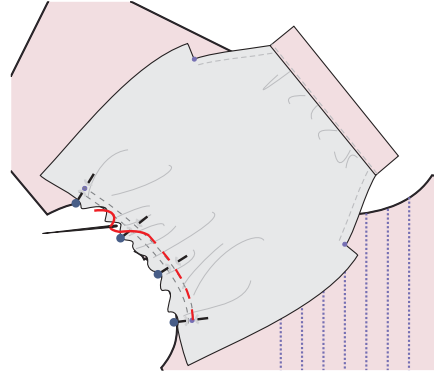
Sleeves:

Clip to the dot for cuff placket. Fold under 1/8" and then 1/8" again. Stitch.
 Stitch two rows of gathering stitches between dots at top of sleeve.
 Stitch one row of easing stitches along the bottom of the sleeve



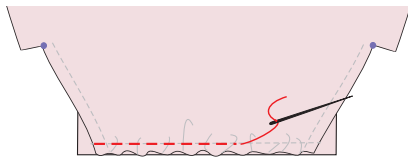
Attach sleeves:

Pin sleeve to bodice by matching dots. Pull gathering threads until sleeve fits. Stitch only between dots, using a 1/4" seam. Leave seam open from dots to underarms.

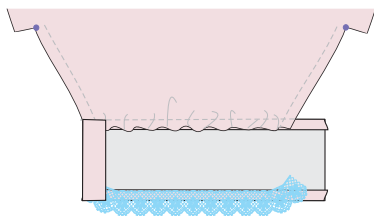


Attach Cuffs:

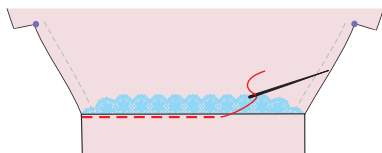
Pin cuffs to sleeve, right side of cuff to wrong side of sleeve. Leave cuff ends extended 1/4" beyond sleeve edges. Draw up easing thread until cuff and sleeve fit. Stitch.



Press cuff down. Press seam toward cuff. Fold in 1/4" extensions. Press.

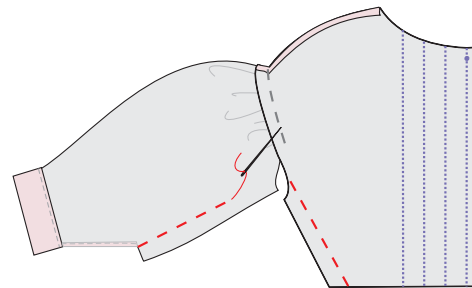


Fold edge of cuff up to cover stitching. Stitch in place.

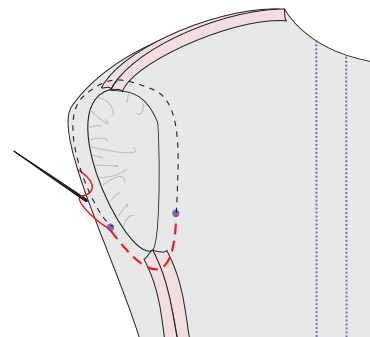


Under arm and side seams:

Sew underarm and side seams, using a 1/4" seam. Press open. French seam, if preferred.



Complete sleeve seam between dots. Overcast entire seam.



Attach Standup Collar:

Press 1/4" along one long side to inside.

